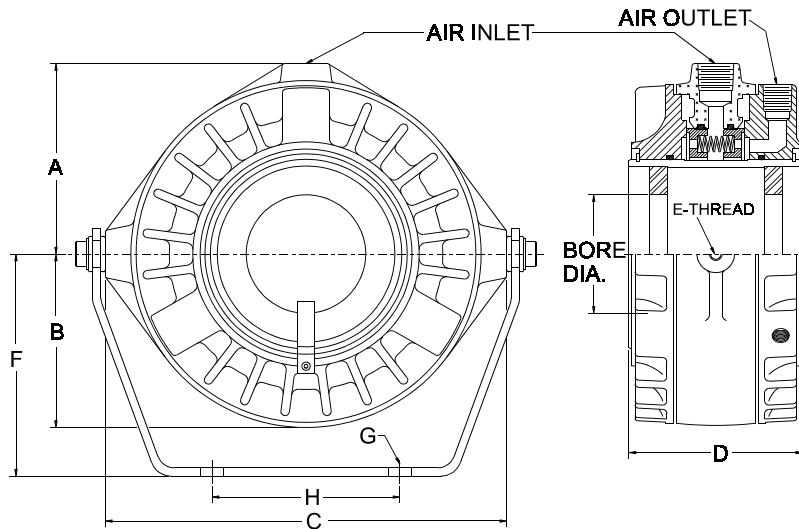




AIR SHAFT SEALS AROUND-THE-SHAFT AIR UNION



The air shaft seal **TRANSMITS AIR** from the air supply to the rotating members of air clutches and air brakes making possible new applications of air clutches and air brakes previously considered impractical for closed-end shafts. The **SLIP-ON INSTALLATION** eliminates long rifle drilling of air passages in shafts and permits easy installation.

AIR SHAFT SEAL

MODEL	BORE (Max.)	BORE (Min.)	A	B	C	D	E	AIR INLET	AIR OUTLET		DRIVE KEY	WT. LBS. (Approx.)
									NO.	SIZE		
250	2.50	1.52	3 3/8	3 3/16	7	4 1/8	5/16-18	3/8 NPT	2	1/4 NPT	1/2X1/4	15
350	3.50	2.52	4	3 3/4	8 1/4	4 3/8	3/8-16	3/8 NPT	2	1/4 NPT	1/2X1/4	18
500	5.00	3.52	5 9/16	5 1/8	11 1/2	5	3/8-16	3/4 NPT	3	1/2 NPT	1/2X1/4	39
700	7.00	5.04	6 9/16	6 1/8	13 1/2	5 1/4	1/2-13	3/4 NPT	3	1/2 NPT	3/4X3/8	57

To enable our Engineering Department to evaluate your installation, the following **required** information is needed with your shaft seal order:

1. Shaft diameter and keyway.
2. Description of application.
3. RPM at which seal will run.
4. Operating air pressure.
5. Mounting support bracket design.
6. Axial movement of shaft.

MOUNTING BRACKET

SEAL MODEL	F	G DIA.	H	Repair Kits	MAX RPM
250	4 3/8	9/16	3 1/4	4018-2	1400
350	4 7/8	9/16	4 1/4	4018-3	1150
500	6 9/16	11/16	5 1/2	4018-4	900