

- **Air Actuated Clutch**

- **Pilot Mount Integral Mount (Backplate/Sheave) Models**

- **Mid Shaft or End Shaft Mounting**

- **Straight Bores**

- **High Torque**

- **Compact Design**

- **Permanently Lubricated Bearings**

- **High Temperature Sealing O-rings**

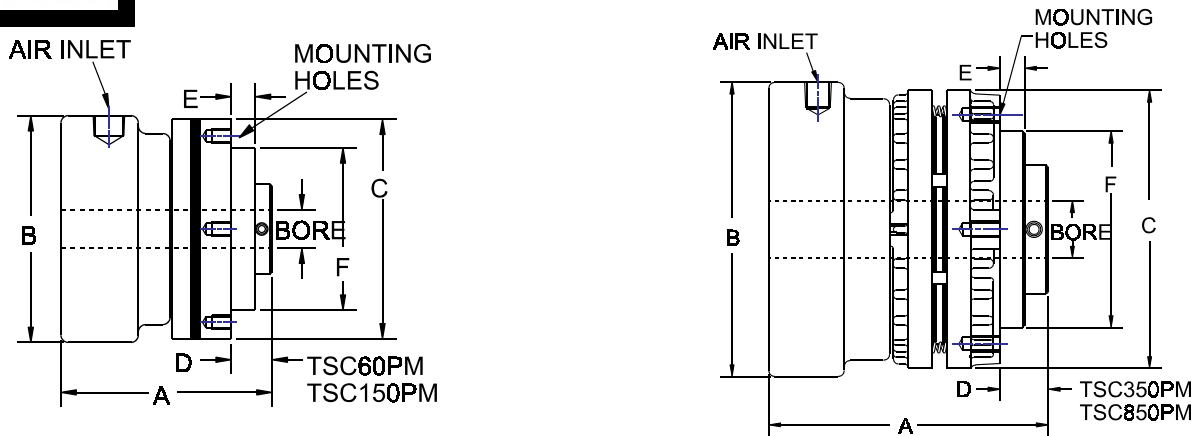
- **Torque Range from 60 in/lbs to 2400 in/lbs**

- **Standard Bore sizes from .625" to 1.625"**

All TSC products use O-rings as dynamic seals, therefore adequate lubrication must be provided in the actuating air circuit to ensure these O-rings do not run dry.



TSC PILOT MOUNT CLUTCH



MINIMUM SPROCKET

CHAIN SIZE	TSC60	TSC15	TSC350	TSC850
25	40T	49T	56T	-
35	28T	34T	38T	52T
40	22T	27T	30T	39T
50	-	22T	25T	32T
60	-	-	21T	27T
80	-	-	-	22T

MODEL	TORQUE @ 80 PSI		HEAT CAPACITY	HEAT DISSIPATION WITH BACKPLATE @ 1800	WK ² BACKPLATE	WK ² HUB AND CLUTCH DISC	WEIGHT
	STATIC	DYNAMIC					
TSC60PM	60 IN-LB (6 Nm)	50 IN-LB (5 Nm)	7,500 FT-LB (10,200 Joule)	.10 HP (.075 KW)	.8 IN ² LB (2.3 Kg-Cm ²)	.65 IN ² LB (1.9 Kg-Cm ²)	3 1/4 (1.5 Kg)
TSC150PM	150 IN-LB (16 Nm)	125 IN-LB (14 Nm)	15,000 FT-LB (20,400 Joule)	.14 HP (.104 KW)	2.5 IN ² LB (7.3 Kg-Cm ²)	2.3 IN ² LB (6.7 Kg-Cm ²)	7 (3.2 Kg)
TSC350PM	350 IN-LB (39 Nm)	285 IN-LB (32 Nm)	30,000 FT-LB (40,800 Joule)	.22 HP (.164 KW)	9.4 IN ² LB (27.5 Kg-Cm ²)	1.9 IN ² LB (5.6 Kg-Cm ²)	9 (4.1 Kg)
TSC850PM	850 IN-LB (96 Nm)	700 IN-LB (79 Nm)	60,000 FT-LB (81,600 Joule)	.50 HP (.373 KW)	37.8 IN ² LB (110.8 Kg-Cm ²)	8.5 IN ² LB (24.9 Kg-Cm ²)	23 (10.4 Kg)

TSC PM

MODEL	A	B	C	D	E	F	MOUNTING HOLES (IN.)
TSC60PM	2 3/4 (69.9)	3 (76.2)	2 7/8 (73.0)	11/32 (8.7)	5/16 (7.9)	2.124 (54.0)	10-24NC X 9/32 (7.1) DEEP 4 PLACES EQUAL SPACED ON 2.437 (61.9) BOLT CIRCLE DIAMETER
TSC150PM	3 5/8 (92.1)	4 (101.6)	3 3/4 (95.2)	9/16 (14.3)	1/4 (6.4)	2.499 (63.5)	1/4 - 20NC X 7/16 (11.1) DEEP 4 PLACES EQUAL SPACED ON 3.000 (76.2) BOLT CIRCLE DIAMETER
TSC350PM	4 1/4 (107.9)	4 1/2 (114.3)	4 1/4 (107.9)	3/4 (19.1)	3/8 (9.5)	2.999 (76.2)	1/4 - 20NC X 7/16 (11.1) DEEP 4 PLACES EQUAL SPACED ON 4.750 (120.6) BOLT CIRCLE DIAMETER
TSC850PM	5 1/4 (133.4)	5 5/8 (142.9)	5 7/8 (149.2)	3/4 (19.1)	3/8 (9.5)	3.999 (101.6)	5/16 - 18 NC X 1/2 (12.7) DEEP 4 PLACES EQUAL SPACED ON 4.750 (120.6) BOLT CIRCLE DIAMETER

MAXIMUM RPM ALL UNITS 1800

Dimensions shown are for general information only.

Certified prints will be furnished for design and installation purposes.

THE CARLSON CO. INC. USA

Fax: (316) 744-2144 • Phone: (316) 744-0481

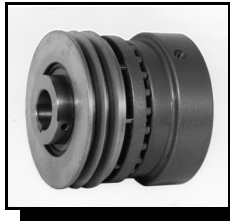
www.carlsoncompany.com

2006

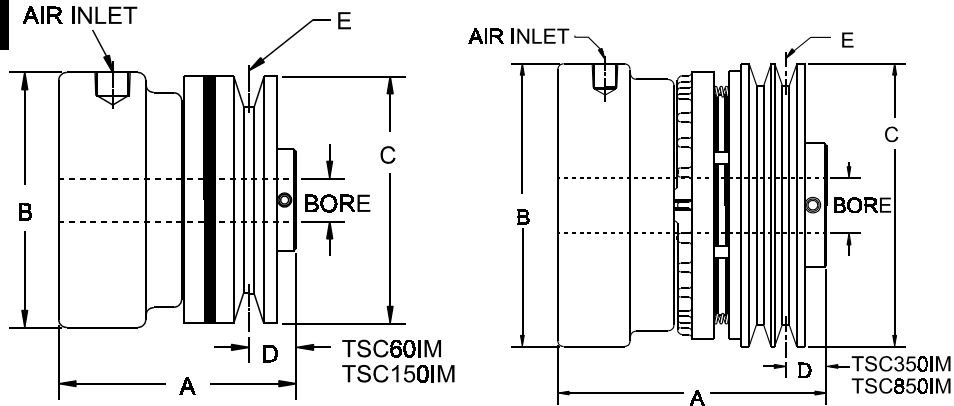
C-2

() - contains metric dimensions

Lubricated Air Required



TSC INTEGRAL MOUNT CLUTCH



TSC IM

MODEL	A	B	C	D	E	MAXIMUM RPM ALL UNITS 1800
TSC60IM	2 3/4 (69.9)	3 (76.2)	2 7/8 (73.0)	35/64 (13.9)	1G3V	
TSC150IM	3 5/8 (92.1)	4 (101.6)	3 21/32 (92.9)	21/32 (16.7)	1G3V	
TSC350IM	4 1/4 (108.0)	4 1/2 (114.3)	4 1/2 (114.3)	21/32 (16.7)	2G3V	
TSC850IM	5 1/4 (133.4)	5 5/8 (142.9)	5 5/16 (135.0)	29/64 (12.0)	3G3V	

TSC REPAIR KITS	
KIT CONTAINS - Retaining Rings, Bearings, O-Rings, Clutch Disc, Friction Lining, Springs	
MODEL	PART NUMBER
60IM and PM	4228K
150IM and PM	4179K
350IM and PM	4175K
850IM and PM	4182K

STANDARD BORE SIZES FOR TSC MODELS

MODEL	ASSEMBLY	BORE	KEYWAY	MODEL	ASSEMBLY	BORE	KEYWAY
TSC60	-2	.625 (15 mm)	3/16 X 3/32 (5 X 5)	TSC350	-2	1.000 (25 mm)	1/4 X 1/8 (8 X 7)
	-4				-8		
TSC150	-2	.875 (20 mm)	3/16 X 3/32 (6 X 6)	TSC850	-0	1.125 1.250 1.375 1.500 1.625 (40 mm)	1/4 X 1/8 1/4 X 1/8 5/16 X 5/32 3/8 X 3/16 3/8 X 3/16 (12 X 8)
	-7				-1		
	-2				-2		
	-3				-3		
	-4				-4		
	-7				-9		

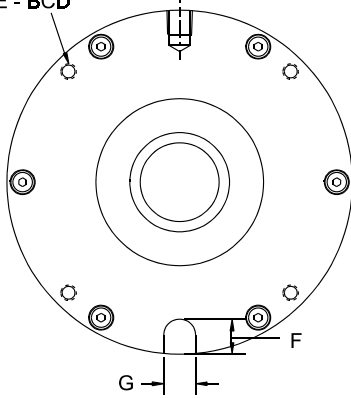
MODEL	TORQUE @ 80PSI		HEAT CAPACITY	HEAT DISSIPATION WITH BACKPLATE @ 1800	WK ² BACKPLATE	WK ² HUB AND CLUTCH DISC	WEIGHT
	STATIC	DYNAMIC					
TSC60IM	60 IN-LB (6 Nm)	50 IN-LB (5 Nm)	7,500 FT-LB (10,200 Joule)	.10 HP (.075 KW)	.95 IN ² LB (2.8 Kg-Cm ²)	.65 IN ² LB (1.9 Kg-Cm ²)	3 1/4 LB (1 Kg)
TSC150IM	150 IN-LB (16 Nm)	125 IN-LB (14 Nm)	15,000 FT-LB (20,400 Joule)	.14 HP (.104 KW)	3.9 IN ² LB (11.4 Kg-Cm ²)	2.3 IN ² LB (6.7 Kg-Cm ²)	7 LB (3 Kg)
TSC350IM	350 IN-LB (39 Nm)	285 IN-LB (32 Nm)	30,000 FT-LB (40,800 Joule)	.22 HP (.164 KW)	12.4 IN ² LB (36.3 Kg-Cm ²)	1.9 IN ² LB (5.5 Kg-Cm ²)	9 LB (4 Kg)
TSC850IM	850 IN-LB (96 Nm)	700 IN-LB (79 Nm)	60,000 FT-LB (81,600 Joule)	.50 HP (.373 KW)	39.5 IN ² LB (115.7 Kg-Cm ²)	8.5 IN ² LB (24.9 Kg-Cm ²)	23 LB (10 Kg)

Dimensions shown are for general information only.
 Certified prints will be furnished upon request for design and installation purposes.

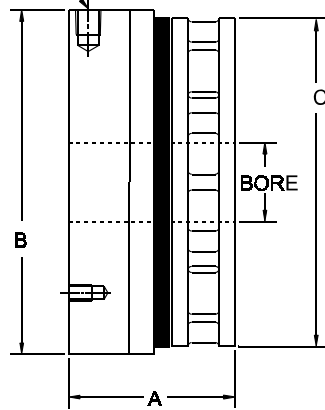


TSB BRAKE DYNAMIC STOPPING BRAKE

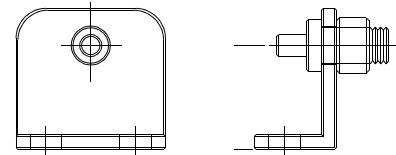
MOUNTING HOLES
D - THREAD
E - BCD



AIR INLET
H



REACTION BRACKET ASSEMBLY
(Purchased seperately)



TSB BRAKES

MODEL	A	B	C	D	E	F	G	H	BORE
TSB450	2 5/8 (66.7)	5 1/2 (139.7)	5 1/4 (133.4)	1/4-20,NC	5.000 (127.0)	9/16 (14.3)	.500 (12.7)	1/8 NPT	QD BUSHING SIZE "JA" * 1 1/4" MAX.
TSB1000	3 (76.2)	6 3/4 (171.5)	6 1/2 (165.1)	5/16-18,NC	6.188 (157.2)	5/8 (15.9)	.625 (15.9)	1/8 NPT	QD BUSHING SIZE "SH" * 1 11/16" MAX.
TSB2400	3 1/2 (88.9)	9 (228.6)	8 1/2 (215.9)	3/8-16,NC	8.375 (212.7)	3/4 (19.1)	.750 (19.1)	1/4 NPT	QD BUSHING SIZE "SK" * 2 3/8" MAX.

*Supplied By Customer

MODEL	STATIC TORQUE @ 80 PSI	WK ² ROTOR IN ² -LB	CONTINUOUS HEAT DISSIPATION @		WEIGHT	REPAIR KIT
	STANDARD		200 RPM	1000 RPM		
TSB450	450 IN-LB (50 Nm @ 5.7 Bar)	12.0 (35.8 Kg-Cm ²)	.26 HP (.194 KW)	.41 HP (.306 KW)	10 LB. (4 Kg)	5641K
TSB1000	1000 IN-LB (113 Nm @ 5.7 Bar)	32.5 (95.2 Kg-Cm ²)	.40 HP (.298 KW)	.71 HP (.530 KW)	17 LB. (7 Kg)	5642K
TSB2400	2400 IN-LB (271 Nm @ 5.7 Bar)	120.0 (351.6 Kg-Cm ²)	.65 HP (.485 KW)	1.40 HP (1.044 KW)	35 LB. (15 Kg)	5643K

MAXIMUM RPM ALL UNITS 1800

DIMENSIONS SHOWN ARE FOR GENERAL INFORMATION ONLY.
CERTIFIED PRINTS WILL BE FURNISHED UPON REQUEST FOR DESIGN AND INSTALLATION PURPOSES.

THE CARLSON CO. INC. USA

Fax: (316) 744-2144 • Phone: (316) 744-0481
www.carlsoncompany.com

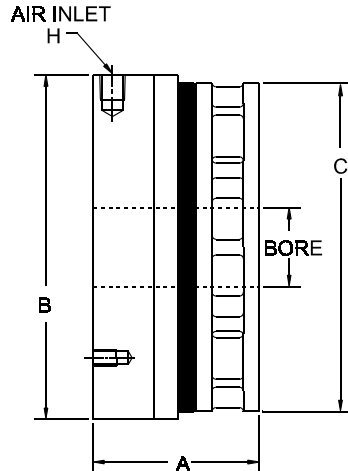
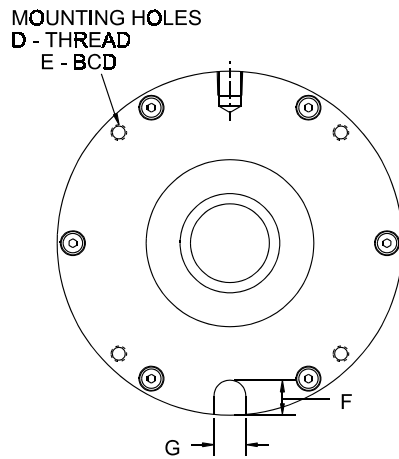
2006

E-8

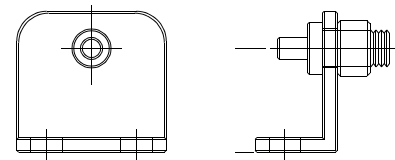
() - contains metric dimensions
Lubricated Air Required



TSBL BRAKE TENSION BRAKE



REACTION BRACKET ASSEMBLY (Purchased seperately)



TSBL BRAKES

MODEL	A	B	C	D	E	F	G	H	BORE
TSBL450	2 5/8 (66.7)	5 1/2 (139.7)	5 1/4 (133.4)	1/4-20,NC	5.000 (127.0)	9/16 (14.3)	.500 (12.7)	1/8 NPT	QD BUSHING SIZE "JA"* 1 1/4" MAX.
TSBL1000	3 (76.2)	6 3/4 (171.5)	6 1/2 (165.1)	5/16-18,NC	6.188 (157.2)	5/8 (15.9)	.625 (15.9)	1/8 NPT	QD BUSHING SIZE "SH"* 1 11/16" MAX.
TSBL2400	3 1/2 (88.9)	9 (228.6)	8 1/2 (215.9)	3/8-16,NC	8.375 (212.7)	3/4 (19.1)	.750 (19.1)	1/4 NPT	QD BUSHING SIZE "SK"* 2 3/8" MAX.

*Supplied By Customer

MODEL	TORQUE @ 80PSI	WK ² ROTOR IN ² -LB	CONTINUOUS HEAT DISSIPATION @		WEIGHT	REPAIR KIT
	LOCO		200 RPM	1000 RPM		
TSBL450	150 IN-LB (17 Nm @ 5.7 Bar)	12.0 (35.2 Kg-Cm ²)	.26 HP (.194 KW)	.41 HP (.306 KW)	10 LB. (4 Kg)	5641LK
TSBL1000	330 IN-LB (37 Nm @ 5.7 Bar)	32.5 (95.2 Kg-Cm ²)	.40 HP (.298 KW)	.71 HP (.530 KW)	17 LB. (7 Kg)	5642LK
TSBL2400	800 IN-LB (90 Nm @ 5.7 Bar)	120.0 (351.6 Kg-Cm ²)	.65 HP (.485 KW)	1.40 HP (1.044 KW)	35 LB. (15 Kg)	5643LK

MAXIMUM RPM ALL UNITS 1800

DIMENSIONS SHOWN ARE FOR GENERAL INFORMATION ONLY.

CERTIFIED PRINTS WILL BE FURNISHED UPON REQUEST FOR DESIGN AND INSTALLATION PURPOSES.

THE CARLSON CO. INC. USA

Fax: (316) 744-2144 • Phone: (316) 744-0481
www.carlsoncompany.com

2006

E-9

() - contains metric dimensions
Lubricated Air Required