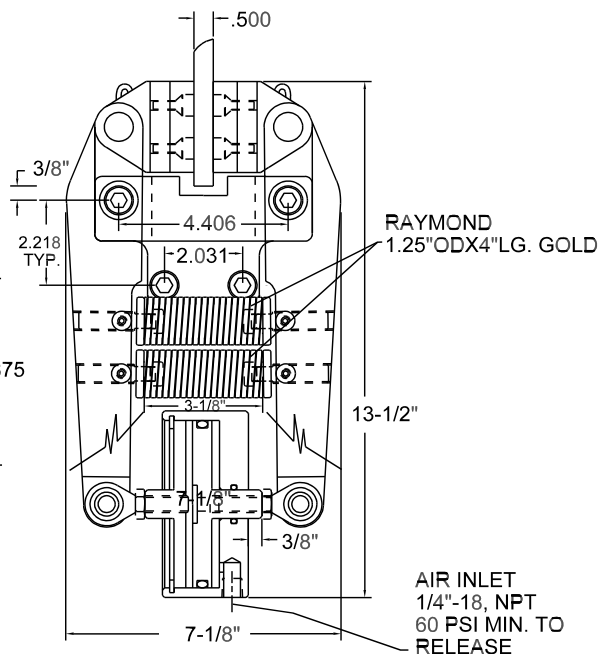
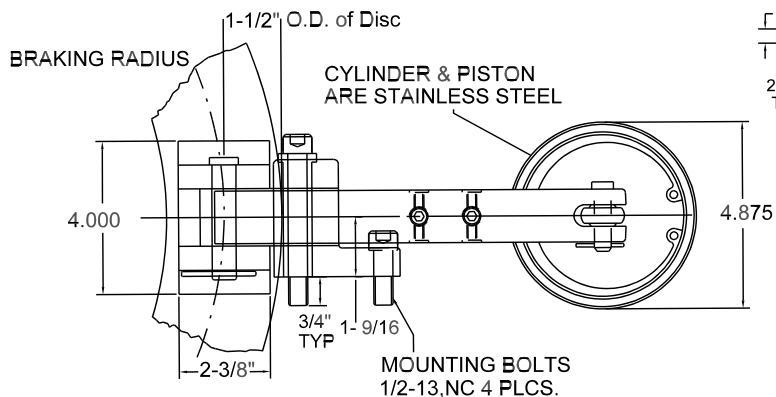


CBSA CALIPER BRAKE SPRING APPLIED / AIR RELEASE



**CBSA20 STATIC BRAKING FORCE
1900 LBS. WITH FULL LINING**

DISC SIZE	STATIC TORQUE INCH POUNDS (Nm)	MINIMUM RELEASE PRESSURE	WEIGHT
12" (305)	8550 (966.2)	60 PSI (4.1 Bar)	30 LBS. (13.6 Kg)
14" (356)	10450 (1180.9)	60 PSI (4.1 Bar)	
16" (406)	12350 (1395.6)	60 PSI (4.1 Bar)	
18" (457)	14250 (1610.3)	60 PSI (4.1 Bar)	
24" (610)	20000 (2260.0)	60 PSI (4.1 Bar)	

CBSA20

NOTE: Dynamic torque is approximately 85% of static torque

The Model CBSA20 is spring applied, air released caliper brake which is used in stopping and holding applications of industrial equipment. It has a unique design, using an actuator located between two caliper arms. This allows the brake to have a compact physical size in relation to its high torque capacity. Friction linings are changed by pulling the clip pin and removing the caliper shoe. The CBSA20 unit comes assembled and ready for mounting.