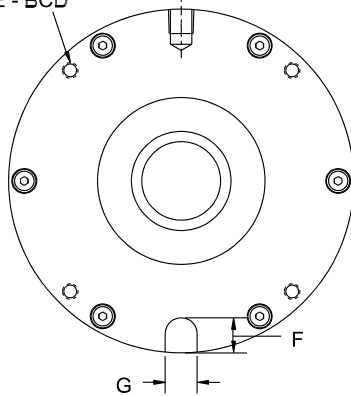
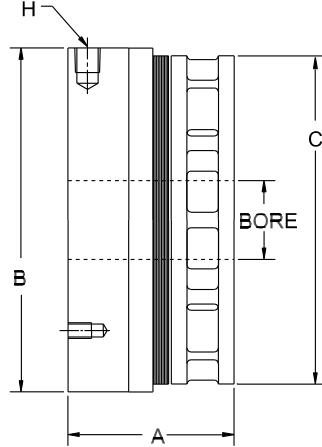


TSBL BRAKE TENSION BRAKE

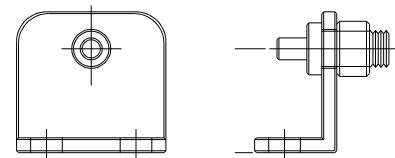
MOUNTING HOLES
D - THREAD
E - BCD



AIR INLET
H



REACTION BRACKET ASSEMBLY
(Purchased separately)



TSBL BRAKES

| MODEL | A | B | C | D | E | F | G | H | BORE |
|----------|-------------------|--------------------|--------------------|------------|--------------------|------------------|------------------|---------|-------------------------------------|
| TSBL450 | 2 5/8 (66.7) | 5 1/2 (139.7) | 5 1/4 (133.4) | 1/4-20,NC | 5.000 (127.0) | 9/16 (14.3) | .500 (12.7) | 1/8 NPT | QD BUSHING SIZE "JA"* 1 1/4" MAX. |
| TSBL1000 | 3 (76.2) | 6 3/4 (171.5) | 6 1/2 (165.1) | 5/16-18,NC | 6.188 (157.2) | 5/8 (15.9) | .625 (15.9) | 1/8 NPT | QD BUSHING SIZE "SH"* 1 11/16" MAX. |
| TSBL2400 | 3 1/2 (88.9) | 9 (228.6) | 8 1/2 (215.9) | 3/8-16,NC | 8.375 (212.7) | 3/4 (19.1) | .750 (19.1) | 1/4 NPT | QD BUSHING SIZE "SK"* 2 3/8" MAX. |

*Supplied By Customer

| MODEL | TORQUE @ 80PSI | WK ² ROTOR IN ² -LB | CONTINUOUS HEAT DISSIPATION @ | | WEIGHT | REPAIR KIT |
|----------|---------------------------------|---|----------------------------------|-------------------------|---------------------|---------------|
| | LOCO | | 200 RPM | 1000 RPM | | |
| TSBL450 | 150 IN-LB (17 Nm @ 5.7 Bar) | 12.0 (35.2 Kg-Cm ²) | .26 HP (.194 KW) | .41 HP (.306 KW) | 10 LB. (4 Kg) | 5641LK |
| TSBL1000 | 330 IN-LB (37 Nm @ 5.7 Bar) | 32.5 (95.2 Kg-Cm ²) | .40 HP (.298 KW) | .71 HP (.530 KW) | 17 LB. (7 Kg) | 5642LK |
| TSBL2400 | 800 IN-LB (90 Nm @ 5.7 Bar) | 120.0 (351.6 Kg-Cm ²) | .65 HP (.485 KW) | 1.40 HP (1.044 KW) | 35 LB. (15 Kg) | 5643LK |

MAXIMUM RPM ALL UNITS 1800

DIMENSIONS SHOWN ARE FOR GENERAL INFORMATION ONLY.

CERTIFIED PRINTS WILL BE FURNISHED UPON REQUEST FOR DESIGN AND INSTALLATION PURPOSES.

THE CARLSON CO. INC. USA

Fax: (316) 744-2144 • Phone: (316) 744-0481
www.carlsoncompany.com

2008

E-11

() - contains metric dimensions
Lubricated Air Required