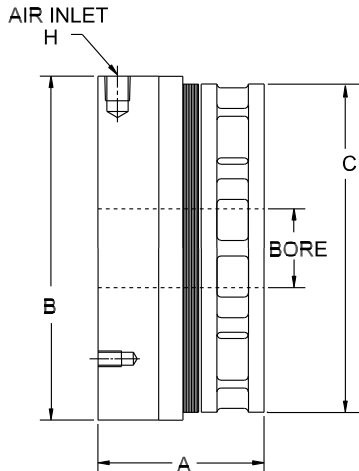
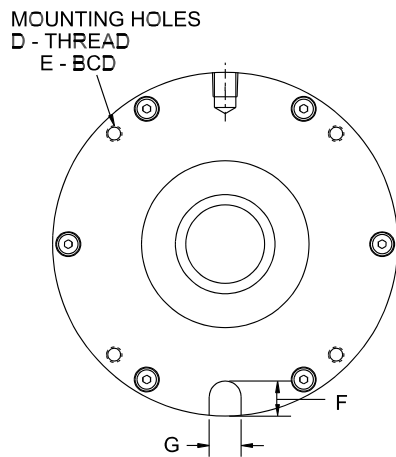
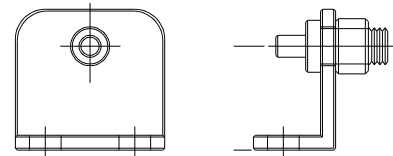




TSB BRAKE DYNAMIC STOPPING BRAKE



REACTION BRACKET ASSEMBLY (Purchased separately)



TSB BRAKES

MODEL	A	B	C	D	E	F	G	H	BORE
TSB450	2 5/8 (66.7)	5 1/2 (139.7)	5 1/4 (133.4)	1/4-20,NC	5.000 (127.0)	9/16 (14.3)	.500 (12.7)	1/8 NPT	QD BUSHING SIZE "JA"* 1 1/4" MAX.
TSB1000	3 (76.2)	6 3/4 (171.5)	6 1/2 (165.1)	5/16-18,NC	6.188 (157.2)	5/8 (15.9)	.625 (15.9)	1/8 NPT	QD BUSHING SIZE "SH"* 1 11/16" MAX.
TSB2400	3 1/2 (88.9)	9 (228.6)	8 1/2 (215.9)	3/8-16,NC	8.375 (212.7)	3/4 (19.1)	.750 (19.1)	1/4 NPT	QD BUSHING SIZE "SK"* 2 3/8" MAX.

*Supplied By Customer

MODEL	STATIC TORQUE @ 80 PSI	WK ² ROTOR IN ² -LB	CONTINUOUS HEAT DISSIPATION @		WEIGHT	REPAIR KIT
	STANDARD		200 RPM	1000 RPM		
TSB450	450 IN-LB (50 Nm @ 5.7 Bar)	12.0 (35.8 Kg-Cm ²)	.26 HP (.194 KW)	.41 HP (.306 KW)	10 LB. (4 Kg)	5641K
TSB1000	1000 IN-LB (113 Nm @ 5.7 Bar)	32.5 (95.2 Kg-Cm ²)	.40 HP (.298 KW)	.71 HP (.530 KW)	17 LB. (7 Kg)	5642K
TSB2400	2400 IN-LB (271 Nm @ 5.7 Bar)	120.0 (351.6 Kg-Cm ²)	.65 HP (.485 KW)	1.40 HP (1.044 KW)	35 LB. (15 Kg)	5643K

MAXIMUM RPM ALL UNITS 1800

DIMENSIONS SHOWN ARE FOR GENERAL INFORMATION ONLY.
CERTIFIED PRINTS WILL BE FURNISHED UPON REQUEST FOR DESIGN AND INSTALLATION PURPOSES.