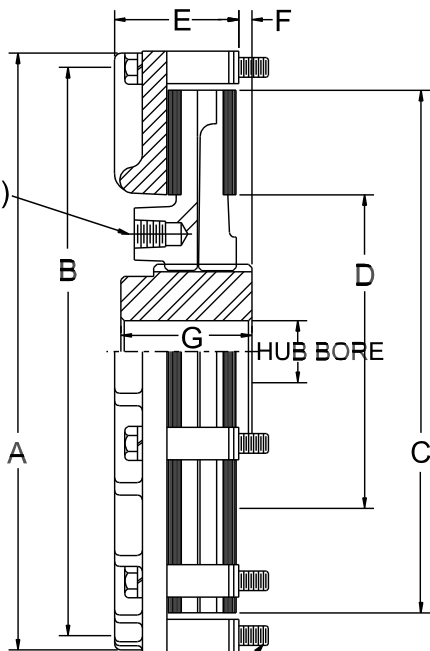


MODEL CW CLUTCH SIZE 8.5 - 10 - 12 - 14



AIR INLET
K-PLACES
J-THREADS (N.P.T.)



H-CAP SCREWS
I-EQUAL PLACES

MODEL	A	B	C	D	E	F	G	H	I	J	K	HUB BORE			PRESSURE PLATE* WK ² Lb-Ft ² (Kg-Cm ²)	TORQUE PLATE WK ² Lb-Ft ² (Kg-Cm ²)	Weight Lbs. Approx. (Kg)
												Min. Bore	Max. Bore Standard Keyway	Max. Bore Shallow Keyway			
8.5	10.00 (254.0)	9.375 (238.1)	8.50 (215.9)	5.25 (133.4)	2.31 (58.7)	.25 (6.4)	2.50 (63.5)	3/8-24	8	1/4	2	1.18 (29.97)	2.000 (50.80)	2.125 (53.98)	0.92 (388.24)	0.70 (295.4)	24 (10.9)
10	11.50 (292.1)	10.875 (276.2)	10.00 (254.0)	6.00 (152.4)	2.37 (60.2)	.25 (6.4)	2.50 (63.5)	3/8-24	10	1/4	2	1.18 (29.97)	2.000 (50.80)	2.125 (53.98)	1.59 (670.98)	1.35 (569.7)	32 (14.5)
12	13.87 (352.3)	13.125 (333.4)	12.00 (304.8)	7.50 (190.5)	2.52 (64.0)	.25 (6.4)	2.75 (69.9)	1/2-20	8	1/4	2	1.68 (42.67)	2.875 (73.03)	3.250 (82.55)	3.80 (1603.60)	2.79 (1177.38)	53 (24.1)
14	15.87 (403.1)	15.125 (384.2)	14.00 (355.6)	8.00 (203.2)	2.52 (64.0)	.25 (6.4)	2.75 (69.9)	1/2-20	8	1/4	2	1.68 (42.67)	2.875 (73.03)	3.250 (82.55)	6.90 (2911.80)	5.90 (2489.8)	67 (30.4)

*Includes Pressure plate, Cap screws and Spacer.

REPAIR KITS

MODEL	TORQUE IN-LBS** @ 60 PSI LOCO LINING (Nm @ 4.3Bar)	TORQUE IN-LBS** @ 80 PSI STANDARD LINING (Nm @ 5.7Bar)	MAXIMUM RPM
8.5	1045 (118)	4290 (485)	3000
10	2501 (283)	10169 (1149)	2800
12	4232 (478)	17322 (1957)	2500
14	8251 (932)	33548 (3791)	2400

HARDWARE KITS CONTAINS- CAPSCREWS, LOCKWASHERS, SPACERS, ADJUSTMENT SPACERS		CENTERING MECHANISM KITS CONTAINS - LOCKNUTS, STUDS, SPRINGS, SCREWS, LOCKWASHERS, CENTERING MECHANISM BRACKETS	
SIZE	PART NUMBER	SIZE	PART NUMBER
8.5	4014-1	8.5	4013-2
10	4014-2	10	4013-2
12	4014-3	12	4013-4
14	4014-4	14	4013-4

** The initial torque on new units may be up to 40% less than torque values shown until the friction lining is worn in.

THE CARLSON CO. INC. USA

Fax: (316) 744-2144 • Phone: (316) 744-0481
www.carlsoncompany.com

2008

D-2

() - contains metric dimensions
Dimensions shown are for general information only.
Certified prints will be furnished upon request for design and installation purposes.