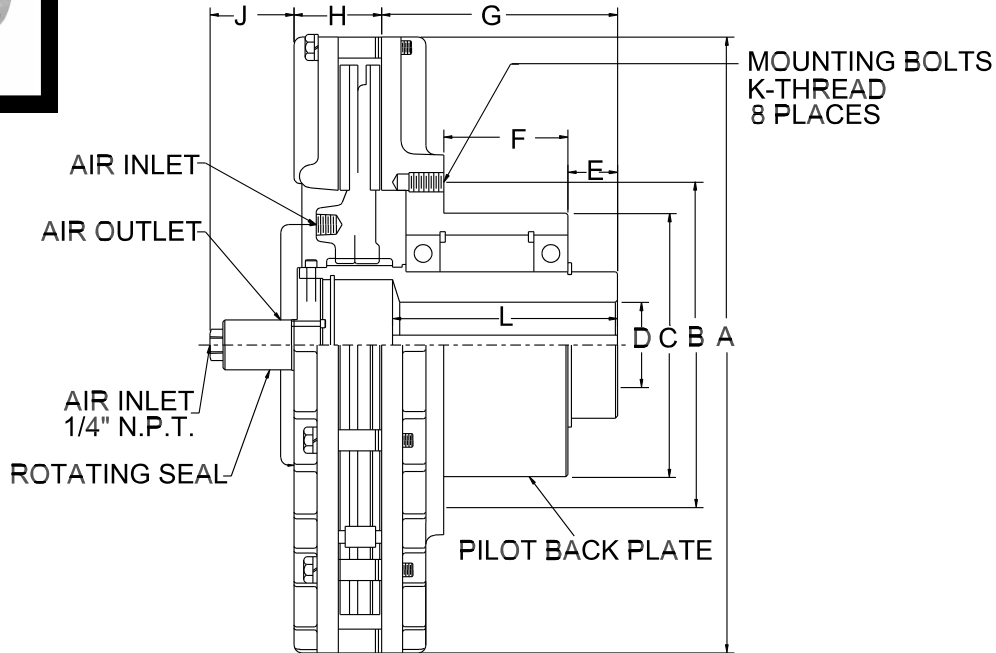




MODEL PM CLUTCH

SIZE 16 - 18 - 20 - 22 - 25



MODEL	A	B	C	D - BORE			E	F	G	H	J	K	L	LOCK * COLLAR	WEIGHT Lbs. (Kg) APPROX.
				MIN.	MAX. STANDARD KEYWAY	MAX. SHALLOW KEYWAY									
16PM3	17.87 (453.9)	10.50 (266.7)	9.50 (241.3)	2.75 (69.9)	3.250 (82.6)	3.563 (90.5)	1.31 (33.3)	5.53 (140.5)	8.87 (225.3)	2.75 (69.9)	3.00 (76.2)	7/16"-14	8.50 (215.9)	2295-3	215 (97.6)
18PM3	19.87 (504.7)	10.50 (266.7)	9.50 (241.3)	2.75 (69.9)	3.250 (82.6)	3.563 (90.5)	1.31 (33.3)	5.53 (140.5)	8.87 (225.3)	2.87 (72.9)	2.87 (72.9)	7/16"-14	8.50 (215.9)	2295-3	250 (113.5)
20PM	22.25 (565.2)	15.00 (381.0)	13.50 (342.9)	3.50 (88.9)	4.625 (117.5)	5.000 (127.0)	1.50 (38.1)	7.50 (190.5)	11.50 (292.1)	3.19 (81.0)	6.06 (153.9)	1/2"-13	10.50 (266.7)	2295-4	530 (240.6)
22PM	24.25 (616.0)	15.00 (381.0)	13.50 (342.9)	3.50 (88.9)	4.625 (117.5)	5.000 (127.0)	1.50 (38.1)	7.50 (190.5)	11.50 (292.1)	3.25 (82.6)	6.00 (152.4)	1/2"-13	10.50 (266.7)	2295-4	600 (272.4)
25PM	27.25 (692.2)	15.00 (381.0)	13.50 (342.9)	3.50 (88.9)	4.625 (117.5)	5.000 (127.0)	1.50 (38.1)	7.50 (190.5)	11.94 (303.3)	4.00 (101.6)	6.13 (155.7)	1/2"-13	10.50 (266.7)	2295-4	765 (347.3)

*LOCK COLLAR REQUIRED ON BORE SIZES WHICH ARE OVER "MAX. STD. KW" BUT ARE LESS THAN OR EQUAL TO "MAX SHALLOW KW"

REPAIR KITS

MODEL	TORQUE (IN-LBS)** @ 60 PSI LOCO LINING (Nm @ 4.3Bar)	TORQUE (IN-LBS)** @ 80 PSI STANDARD LINING (Nm @ 5.7Bar)	MAXIMUM RPM
16	11792 (1332)	48196 (5446)	2200
18	19090 (2157)	77684 (8778)	2000
20	23879 (2698)	97543 (11022)	1800
22	35159 (3973)	143120 (16172)	1500
25	51677 (5840)	210200 (23754)	1200

HARDWARE KITS CONTAINS- CAPSCREWS, LOCKWASHERS, SPACERS, ADJUSTMENT SPACERS		CENTERING MECHANISM KITS CONTAINS - LOCKNUTS, STUDS, SPRINGS, SCREWS, LOCKWASHERS, CENTERING MECHANISM BRACKETS	
SIZE	PART NUMBER	SIZE	PART NUMBER
16	4014-5	16	4013-6
18	4014-6	18	4013-6
20	4014-7	20	4013-8
22	4014-8	22	4013-8
25	4014-9	25	4013-10

** The initial torque on new units may be up to 40% less than torque values shown until the friction lining is worn in.

THE CARLSON CO. INC. USA

Fax: (316) 744-2144 • Phone: (316) 744-0481
www.carlsoncompany.com

2008

D - 12

() - contains metric dimensions
Dimensions shown are for general information only.
Certified prints will be furnished upon request for
design and installation purposes.