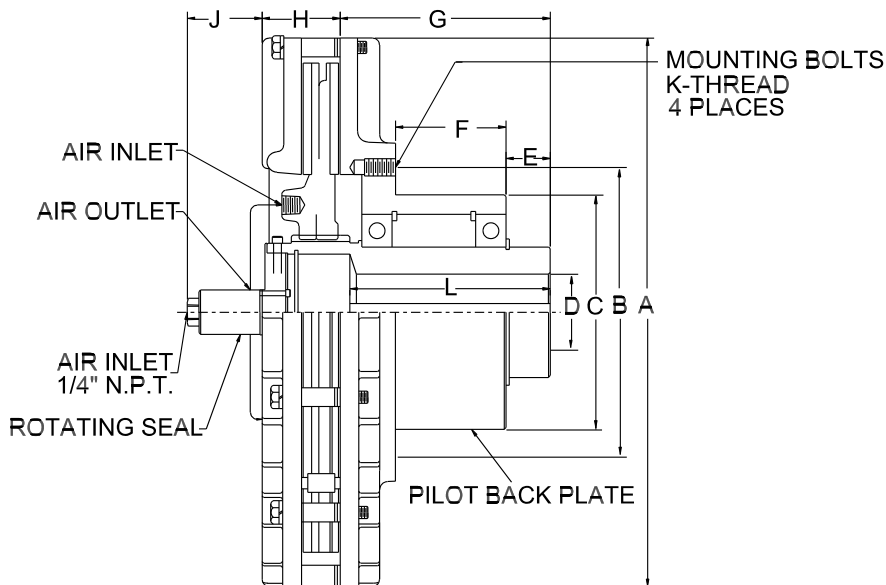




MODEL PM CLUTCH

SIZE 8.5 - 10 - 12 - 14



MODEL	A	B	C	D - BORE			E	F	G	H	J	K	L	LOCK* COLLAR	WEIGHT Lbs. (Kg) APPROX.
				MIN.	MAX. STANDARD KEYWAY	MAX. SHALLOW KEYWAY									
8.5PM-1	10.00 (254.0)	6.00 (152.4)	4.75 (120.7)	1.25 (31.8)	1.750 (44.5)	1.937 (49.2)	.50 (12.7)	2.00 (50.8)	3.62 (91.9)	2.31 (58.7)	3.07 (78.0)	3/8"-16	3.75 (95.3)	2295-1	46 (20.9)
8.5PM-2	10.00 (254.0)	8.50 (215.9)	6.75 (171.5)	2.00 (50.8)	2.750 (69.9)	3.000 (76.2)	.87 (22.1)	2.00 (50.8)	4.06 (103.1)	2.31 (58.7)	3.07 (78.0)	1/2"-13	3.25 (82.6)	2295-2	50 1/2 (22.9)
10PM-1	11.50 (292.1)	6.00 (152.4)	4.75 (120.7)	1.25 (31.8)	1.750 (44.5)	1.937 (49.2)	.50 (12.7)	2.00 (50.8)	3.62 (91.9)	2.38 (60.5)	3.00 (76.2)	3/8"-16	3.75 (95.3)	2295-1	57 (25.9)
10PM-2	11.50 (292.1)	8.50 (215.9)	6.75 (171.5)	2.00 (50.8)	2.750 (69.9)	3.000 (76.2)	.94 (23.9)	2.00 (50.8)	4.06 (103.1)	2.38 (60.5)	3.00 (76.2)	1/2"-13	3.25 (82.6)	2295-2	65 (29.5)
12PM	13.887 (352.7)	9.00 (228.6)	7.25 (184.2)	1.75 (44.5)	2.750 (69.9)	3.000 (76.2)	1.06 (26.9)	3.87 (98.3)	6.56 (166.6)	2.52 (64.0)	3.13 (79.5)	1/2"-13	6.25 (158.8)	2295-2	125 (56.8)
14PM	15.87 (403.1)	9.00 (228.6)	7.25 (184.2)	1.75 (44.5)	2.750 (69.9)	3.000 (76.2)	1.06 (26.9)	3.87 (98.3)	6.56 (166.6)	2.52 (64.0)	3.13 (79.5)	1/2"-13	6.25 (158.8)	2295-2	147 (66.7)

*LOCK COLLAR REQUIRED ON BORE SIZES WHICH ARE OVER "MAX. STD. KW" BUT ARE LESS THAN OR EQUAL TO "MAX SHALLOW KW"

REPAIR KITS

MODEL	TORQUE (IN-LBS)** @ 60 PSI LOCO LINING (Nm @ 4.3Bar)	TORQUE (IN-LBS)** @ 80 PSI STANDARD LINING (Nm @ 5.7Bar)	MAXIMUM RPM
8.5	1045 (118)	4290 (485)	3000
10	2501 (283)	10169 (1149)	2800
12	4232 (478)	17322 (1957)	2500
14	8251 (932)	33548 (3791)	2400

HARDWARE KITS CONTAINS- CAPSCREWS, LOCKWASHERS, SPACERS, ADJUSTMENT SPACERS		CENTERING MECHANISM KITS CONTAINS - LOCKNUTS, STUDS, SPRINGS, SCREWS, LOCKWASHERS, CENTERING MECHANISM BRACKETS	
SIZE	PART NUMBER	SIZE	PART NUMBER
8.5	4014-1	8.5	4013-2
10	4014-2	10	4013-2
12	4014-3	12	4013-4
14	4014-4	14	4013-4

** The initial torque on new units may be up to 40% less than torque values shown until the friction lining is worn in.

THE CARLSON CO. INC. USA
 Fax: (316) 744-2144 • Phone: (316) 744-0481
 www.carlsoncompany.com

2008

D - 11

() - contains metric dimensions
 Dimensions shown are for general information only.
 Certified prints will be furnished upon request for
 design and installation purposes.