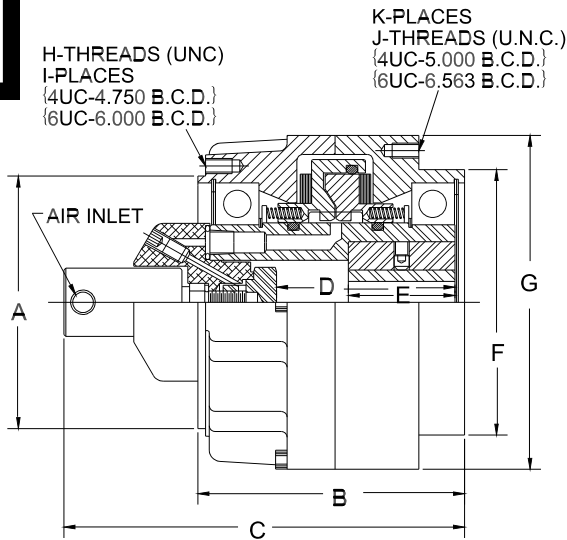
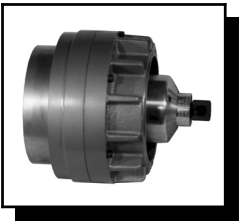
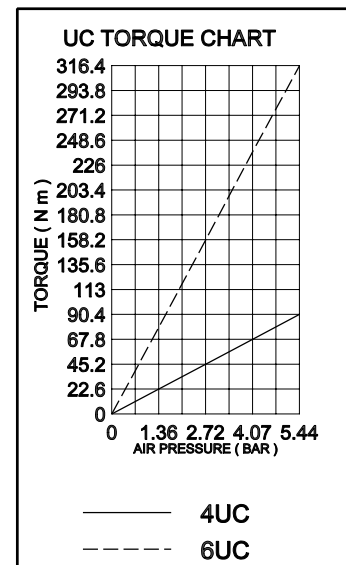
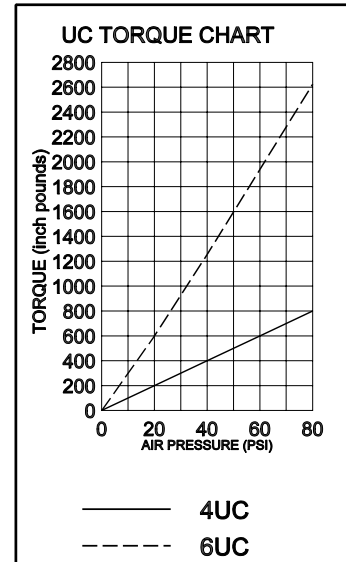


MODEL UC PM CLUTCH



ADAPTER BUSHING

UNIT	PART NUMBER	BORE INCHES (mm)	KEYWAY INCHES (mm)	AIR SUPPLY KIT
4UC	2617-3	1.125 (28.575)	1/4 X 1/8 (6.4 X 3.2)	2600
	2617-4	1.250 (31.750)		
	2617-5	1.375 (34.925)	5/16 X 5/32 (7.9 X 3.9)	
6 UC	2580-3	1.250 (31.750)	1/4 X 1/8 (6.4 X 3.2)	2341
	2580-5	1.500 (38.100)	3/8 X 3/16 (9.5 X 4.8)	
	2580-6	1.625 (41.275)		
	2580-8	1.875 (47.625)	1/2 X 1/4 (12.7 X 6.4)	



Rotating air unions with adapter (necessary for end shaft mounting) are available for both the 4UC and 6UC. Hub to shaft adapter bushings (see chart for sizes) are also available and make the clutch easy to install.

Dimensions shown are for general information only.
Certified prints will be furnished upon request for design and installation purposes.

MODEL	A	B	C	D	E	F	G	H	I	J	K	INNER HUB (KgCm ²)	OUTER HOUSING (KgCm ²)	MAX. RPM	WT.	HP UP TO*
4UC	4.250 (107.950)	4 3/8 (111.125)	6 9/16 (166.700)	2 15/16 (74.610)	1 3/4 (44.450)	4.375 (111.125)	5 1/2 (139.70)	1/4-20	3	1/4-20	4	.15 (63.30)	.32 (135.04)	3,200	19 (8.63 Kg)	.75 (.560 Kw)
6UC	5.375 (136.525)	5 11/16 (144.463)	8 7/16 (214.313)	4 3/16 (106.350)	2 1/2 (63.50)	5.875 (149.225)	7 1/2 (190.50)	3/8-16	3	3/8-16	4	.48 (202.56)	1.26 (531.72)	2,400	41 (18.6 Kg)	1.5 (1.119Kw)

*Continuous thermal dissipation at 1750 RPM