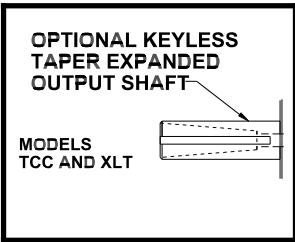
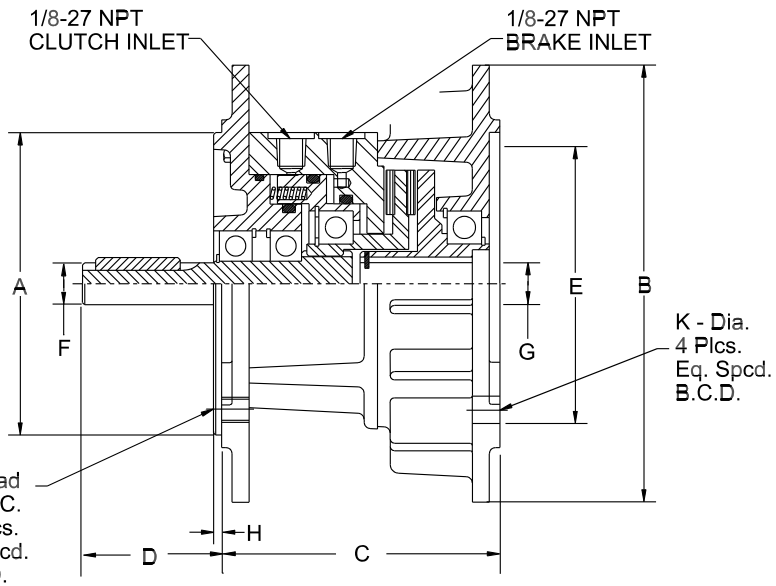
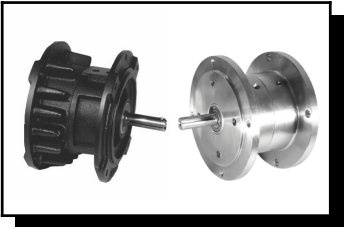


ECB CLUTCH/BRAKE



MODEL	A	B	C	D	E	F	G	H	J	K	BCD	MAXIMUM RPM ALL UNITS 1800
ECB 625-XL ECB 625-XLT ECB 625-XL-SS ECB 625-XLT-SS	4.499	6.5	3.875	2.063	4.501	$\frac{.624}{.625}$	$\frac{.626}{.627}$.120	.375-16	.406	5.875	
ECB 875-XL ECB 875-XLT ECB 875-XL-SS ECB 875-XLT-SS	4.499	6.5	4.25	2.125	5.501	$\frac{.874}{.875}$	$\frac{.876}{.877}$.120	.375-16	.406	5.875	
ECB1125-CC ECB1125-TCC	8.498	9	6	2.875	8.502	$\frac{1.124}{1.125}$	$\frac{1.126}{1.127}$.25	.5-13	.531	7.250	

MODEL	TORQUE	STATIC	DYNAMIC	HEAT DISSIPATION	OUTPUT* SHAFT	HEAT CAPACITY	WK ² OF CYCLING PART	KEY	WEIGHT	FRAME SIZE
ECB 625-XL ECB 625-XLT ECB 625-XL-SS ECB 625-XLT-SS	CLUTCH @ 80PSI BRAKE @ 80PSI	160 IN-LB	144 IN-LB	.12 HP	75#	12000 FT-LB	.70 IN ² LB	.188	15#	56C
ECB 875-XL ECB 875-XLT ECB 875-XL-SS ECB 875-XLT-SS	CLUTCH @ 80PSI BRAKE @ 80PSI	270 IN-LB	243 IN-LB	.15 HP	140#	18000 FT-LB	1.90 IN ² LB	.188	20#	143TC/145TC
ECB 1125-CC ECB 1125-TCC	CLUTCH @ 80PSI BRAKE @ 80PSI	450 IN-LB	400 IN-LB	.3 HP	275#	25000 FT-LB	7.90 IN ² LB	.25	49#	182TC/184TC

*Based on 10,000 hours bearing life with load 1" from bearing face
The initial torque on new units may be up to 40% less than torque values shown in the above chart until the friction lining is worn in.

ECB REPAIR KITS			
MODEL	PART NUMBER	MODEL	PART NUMBER
ECB625-XL	5505K	ECB875-XLT	5509K
ECB625-XLT	5505K	ECB1125-CC	4115K
ECB875-XL	5509K	ECB1125-TCC	4115K

THE CARLSON CO. INC. USA
Fax: (316) 744-2144 • Phone: (316) 744-0481
www.carlsoncompany.com

2008

A - 2

ECB clutch/brakes use o-rings as dynamic seals. Therefore adequate lubrication must be provided in the air actuating circuit to ensure the O-rings do not run dry