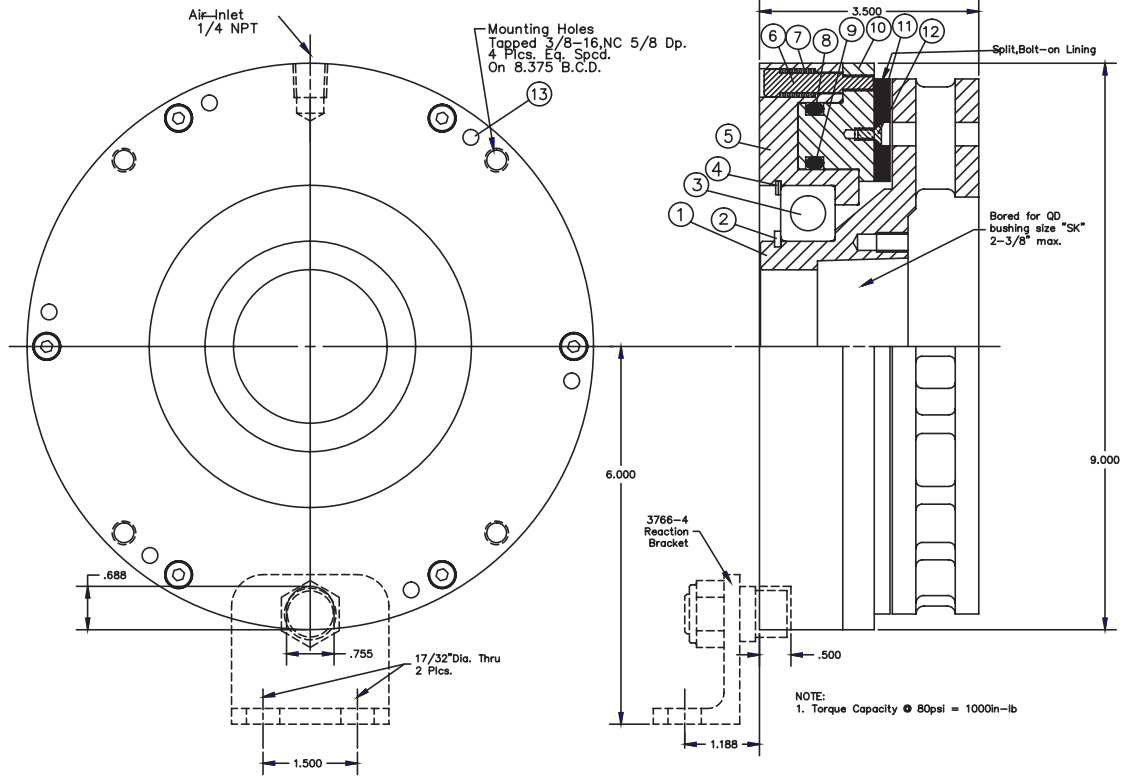


MODEL TSB 2400 L (A)



GENERAL DESCRIPTION

The model TSB2400L(A) is a pneumatic brake such that when air pressure between 20 psi and 80psi is applied to the inlet port, the operating piston with the friction lining will move to brake the rotor which is mounted on the shaft. This model has an external bolt pattern to mount to a machine frame, or a bracket is available to react the brake torque using the slot provided in the cylinder. The unit is assembled and ready for mounting as shipped.

INSTALLATION

Bolt the cylinder to the machine using (4) 3/8" coarse thread capscrews of the appropriate length. The tapped holes in the cylinder are 5/8" deep. Coat the mounting area of the shaft with "Molykote". Install a key in the shaft's keyway. Slide the unit onto the shaft and into position. Do not use a hammer to position the unit as bearing damage may occur. Once the unit is in position on the shaft, lock it down by tightening the capscrews provided with the QD bushing. Install the air line to the 1/4"NPT inlet port.

Use a dryer and a lubricator in the air line to prevent internal rust and promote long life. Check the unit several times after putting it into use to be sure it is not running hot. The maximum shell temperature should be 180F.

MAINTENANCE

This model brake has no items requiring maintenance or adjustment. Items which have limited life and may eventually need replacing include: linings, springs, o-rings, and bearings. The items are available in a repair kit as shown on the parts list.

ITEM	DESCRIPTION	PART NO.	Qty.
1.	Rotor	3711	1
2.	Snap Ring*	3717	1
3.	Bearing*	2508	1
4.	Retaining Ring*	2509	1
5.	Cylinder	5376	1
6.	Shoulder Bolt	5377	6
7.	Spring*	5378	6
8.	O Ring*	2936	1
9.	O Ring*	3719	1
10.	Piston	5375	1
11.	Lining*	3726	1
12.	Screw*	3727	10
13.	Dowel Pin	3919-6	6
	Repair Kit (Includes Items with *)	5643LK	

THE CARLSON COMPANY, INC.

PHONE: (316) 744-0481

FAX: (316) 744-2144

6045 NORTH BROADWAY

E-MAIL: sales@carlsoncompany.com

WICHITA, KANSAS 67219

WEB: www.carlsoncompany.com

USA