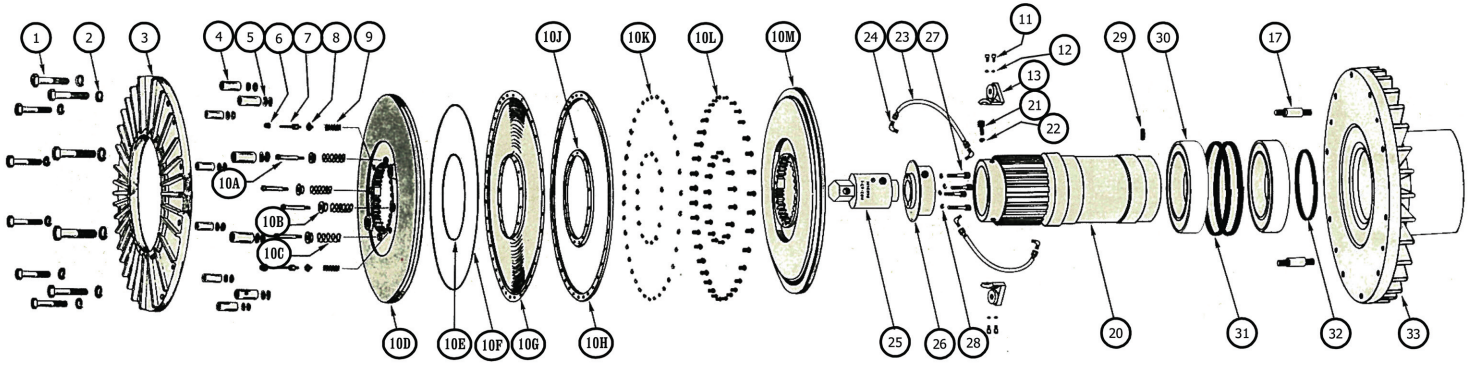


PILOT MOUNT



ITEM	DESCRIPTION	8.5PM-1		8.5PM-2		10PM-1		10PM-2		12PM		14PM		16PM-2		18PM-2	
		PART NO.	QTY.	PART NO.	QTY.	PART NO.	QTY.	PART NO.	QTY.	PART NO.	QTY.	PART NO.	QTY.	PART NO.	QTY.	PART NO.	QTY.
1.	Cap Screw	1016-11	8	1016-11	8	1016-11	10	1016-11	10	1017-10	8	1017-10	8	1017-11	10	1017-11	12
2.	Lockwasher	1019-6	8	1019-6	8	1019-6	10	1019-6	10	1019-8	8	1019-8	8	1019-8	10	1019-8	12
3.	Pressure Plate	3012-01	1	3012-01	1	3012-02	1	3012-02	1	3012-03	1	3012-04	1	3012-05	1	3012-06	1
4.	Spacer	1001-10	8	1001-10	8	1001-10	10	1001-10	10	1001-30	8	1001-30	8	1001-30	10	1001-30	12
5.	Adjustment Spacer	1691-1	16	1691-1	16	1691-1	20	1691-1	20	1691-2	16	1691-2	16	1691-2	30	1691-2	36
6.	Centering Mechanism Locknut	1189-6	2	1189-6	2	1189-6	2	1189-6	2	1189-6	2	1189-6	2	1189-7	2	1189-7	2
7.	Centering Mechanism Stud	1027	2	1027	2	1027	2	1027	2	1027	2	1027	2	1006	2	1006	2
8.	Stud Lock Clip	1042	2	1042	2	1042	2	1042	2	1042	2	1042	2	1014	2	1014	2
9.	Centering Mechanism Spring	1040	2	1040	2	1040	2	1040	2	1040	2	1040	2	1007	2	1007	2
10.	Inner-Outer Torque Plate Assy.	1148-1	1	1148-1	1	1148-2	1	1148-2	1	1148-3	1	1148-4	1	1148-5	1	1148-6	1
10A.	Spring Shoulder Bolt	1043	4	1043	4	1043	4	1043	4	1043	4	1043	4	1002	4	1002	4
10B.	Spring Retaining washer	1028	4	1028	4	1028	4	1028	4	1028	4	1028	4	1004	4	1004	4
10C.	Release Spring	1038-1	4	1038-1	4	1038-1	4	1038-1	4	1038	4	1038	4	1003	4	1003	4
10D.	Outer Torque Plate Assy.	1102	1	1102	1	1104	1	1104	1	1093	1	1096	1	1098	1	1106	1
	Friction Lining	2031-5	1	2031-5	1	2031-6	1	2031-6	1	2031-7	1	2031-8	1	2031-1	1	2031-2	1
10E.	Inner Seal	1240-1	1	1240-1	1	1240-1	1	1240-1	1	1240-4	1	1240-4	1	1240-7	1	1240-7	1
10F.	Outer Seal	1240-2	1	1240-2	1	1240-3	1	1240-3	1	1240-5	1	1240-6	1	1240-8	1	1240-9	1
10G.	Diaphragm	3039	1	3039	1	3016	1	3016	1	3040	1	3041	1	3001	1	3008	1
10H.	Outer Clamp Ring	3003-1	1	3003-1	1	3003-2	1	3003-2	1	3003-3	1	3003-4	1	3003-5	1	3003-6	1
10J.	Inner Clamp Ring	2003-1	1	2003-1	1	2003-1	1	2003-1	1	2003-2	1	2003-2	1	2003-3	1	2003-3	1
10K.	Lockwasher	1019-2	40	1019-2	40	1019-2	44	1019-2	44	1019-2	46	1019-2	50	1019-3	52	1019-3	60
10L.	Socket Head Screw	1020	40	1020	40	1020	44	1020	44	1020	46	1020	50	1021	52	1021	60
10M.	Inner Torque Plate Assy.	1103	1	1103	1	1105	1	1105	1	1094	1	1097	1	1099	1	1107	1
	Friction Lining	2031-5	1	2031-5	1	2031-6	1	2031-6	1	2031-7	1	2031-8	1	2031-1	1	2031-2	1
11.	Bracket Screw	1015	4	1015	4	1015	4	1015	4	1015	4	1015	4	1015	4	1015	4
12.	Lock washer	1019-1	4	1019-1	4	1019-1	4	1019-1	4	1019-1	4	1019-1	4	1019-1	4	1019-1	4
13.	Centering Mechanism Bracket	1030-1	2	1030-1	2	1030-1	2	1030-1	2	1095	2	1095	2	1005	2	1005	2
17.	Register Pin	1752-1	2	1752-1	2	1752-1	2	1752-1	2	1752-1	2	1752-1	2	1752-3	2	1752-3	2
20.	Adapt or Shaft	2133-*	1	2132.*	1	2133.*	1	2132.*	1	2131.*	1	2131.*	1	2156.*	1	2156.*	1
21.	Socket Head Cap Screw	1666-4	2	1666-4	2	1666-4	2	1666-4	2	1666-4	2	1666-4	2	1666-4	2	1666-4	2
22.	Lock washer	1019-4	2	1019-4	2	1019-4	2	1019-4	2	1019-4	2	1019-4	2	1019-4	2	1019-4	2
23.	Hose Assy.	1399	2	1399	2	1399	2	1399	2	1493	2	1493	2	1488	2	1488	2
24.	Fitting	1048	4	1048	4	1048	4	1048	4	1182	4	1182	4	1297	2	1297	2
25.	Rotating Air Union	2123	1	2123	1	2123	1	2123	1	2123	1	2123	1	2123	1	2123	1
26.	Air Union Adaptor	2128	1	2128	1	2128	1	2128	1	2124	1	2124	1	2129	1	2129	1
27.	Socket Head Screw	2125-7	4	2125-7	4	2125-7	4	2125-7	4	2125-7	4	2125-7	4	2125-7	4	2125-7	4
28.	Lockwasher	1019-2	4	1019-2	4	1019-2	4	1019-2	4	1019-2	4	1019-2	4	1019-2	4	1019-2	4
29.	Set Screw																
30.	Bearing	1416	2	1418	2	1416	2	1418	2	1418	2	1418	2	1787	2	1787	2
	Bearing Spacer			1476-1	1												
31.	Retaining Ring	1753	2	1492	1	1753	2	1492	2	1492	2	1492	2	1788	2	1788	2
32.	Retaining Ring	1417-1	1	1431-1	1	1417-1	1	1431-1	1	1431-1	1	1431-1	1	1789-1	1	1789-1	1
33.	Backplate Pilot Mount	3177.**	1	3178.**	1	3179.**	1	3180.**	1	3170.**	1	3151.**	1	3259	1	3263	1

*Bore and Keyway sizes must be specified when ordering this part.

**Pilot Keyway not standard, optional, furnished only upon request.

THE CARLSON COMPANY, INC.

6045 NORTH BROADWAY

WICHITA, KANSAS 67219

USA

PHONE: (316) 744-0481

FAX: (316) 744-2144

E-MAIL: sales@carlsoncompany.com

WEB: www.carlsoncompany.com