

THE
Carlson COMPANY, INC.
Clutches, Brakes and Torque Limiters

for the Food Processing and Packaging Industries

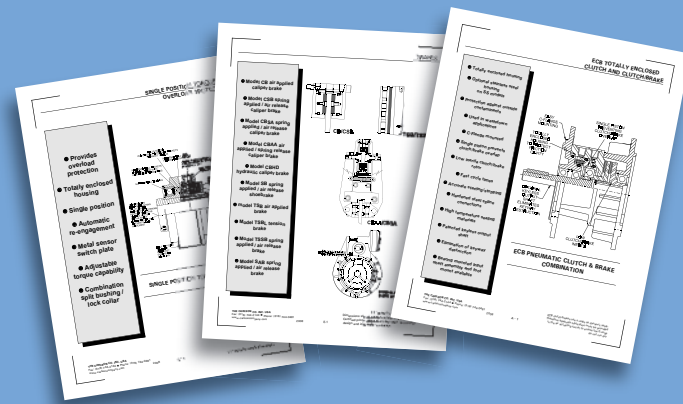
MADE IN THE U.S.A. – SOLD WORLDWIDE

Carlson products are manufactured in a 54,000 sq. ft. facility in Wichita, Kansas, USA and are sold through a system of knowledgeable distributors and field sales representatives throughout the world.

This experienced sales organization, along with Carlson's technical group, is dedicated to applying the correct Carlson product or customizing Carlson products to meet your specific need.

We make it easy to find the right product for your application. For complete product specifications and dimensions, application profiles and technical data:

- Visit our website at WWW.CARLSONCOMPANY.COM
- Contact our sales department, sales@carlsoncompany.com to obtain a General Line Catalog, or
- Contact your **Authorized Distributor**.



THE CARLSON COMPANY, INC.
6045 NORTH BROADWAY
WICHITA, KANSAS 67201 USA

PHONE: (316) 744-0481
FAX: (316) 744-2144
E-MAIL: sales@carlsoncompany.com
WEB: www.CarlsonCompany.com



DISTRIBUTED BY:

THE
Carlson COMPANY, INC.
Clutches, Brakes and Torque Limiters

for the Food Processing and Packaging Industries



ECB PNEUMATIC CLUTCH/BRAKE

- C-flange mounted
- Patented keyless output shaft
- Single piston prevents clutch/brake overlap
- Accurate starting/stopping

- Totally enclosed housing
- Available in stainless steel or black matte housing

MODEL	STATIC TORQUE	FRAME SIZE
ECB 625-XL ECB 625-XLT	160 IN-LB	56C
ECB 875-XL ECB 875-XLT	270 IN-LB	143TC/145TC
ECB 1125-CC ECB 1125-TCC	450 IN-LB	182TC/184TC



CAB-CC PNEUMATIC CLUTCH/BRAKE

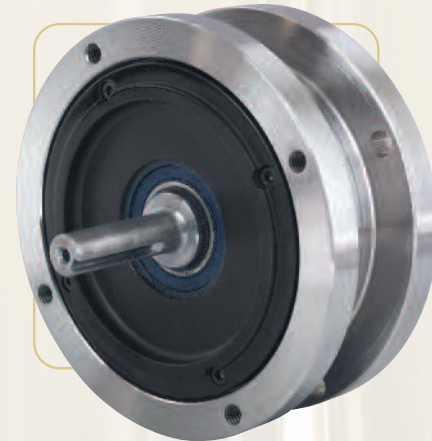
MODEL	STATIC TORQUE	NEMA FRAMES
1375 AIR CLUTCH / AIR BRAKE	960 1400	213TC / 215TC



SB-CC BRAKE

- Totally enclosed housing
- C-flange mounted
- Available in stainless steel or black matte housing

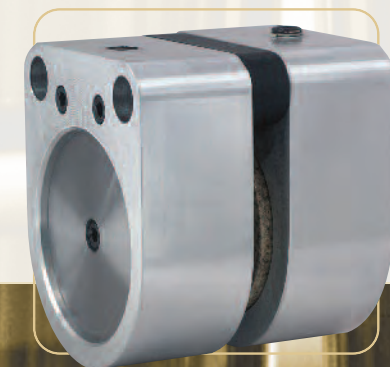
MODEL	STATIC TORQUE	NEMA FRAMES
625, 875 SPRING BRAKE	300	56C 143TC/145TC
1125, 1375 SPRING BRAKE	1200	182TC/184TC 213TC/215TC
1625 SPRING BRAKE	1500	254TC



CB PNEUMATIC CALIPER BRAKE and CSB SPRING APPLIED/AIR RELEASE CALIPER BRAKE

- Double acting piston
- Aluminum housing
- Removable friction linings

ROTOR DIA.	CB100	CB200	CSB100	CSB200
	Static Torque Ratings @ 80PSI			
6"	270 IN-LB	440 IN-LB	160 IN-LB	265 IN-LB
9"	460 IN-LB	810 IN-LB	275 IN-LB	485 IN-LB
12"	650 IN-LB	1190 IN-LB	390 IN-LB	715 IN-LB



TLSP SINGLE POSITION TORQUE LIMITER

- Provides overload protection in either direction
- Totally enclosed housing
- Single position
- Automatic re-engagement
- Metal sensor switch plate
- Adjustable torque capability
- Combination split bushing/lock collar

MODEL	BORE RANGE (IN)	TORQUE	
		MINIMUM	MAXIMUM
TLSP5	.750 to 1.250	125 IN-LB	500 IN-LB
TLSP20	.938 to 1.500	500 IN-LB	2000 IN-LB
TLSP60	1.250 to 2.000	1500 IN-LB	6000 IN-LB



TSC PNEUMATIC CLUTCH

- Pilot mount and integral mount (backplate/sheave) designs
- Mid shaft or end shaft mounting
- Compact design

	TSC60	TSC150	TSC350	TSC850				
CHAIN SIZE	MINIMUM SPROCKET							
25	40T	49T	56T	-				
35	28T	34T	38T	52T				
40	22T	27T	30T	39T				
50	-	22T	25T	32T				
60	-	-	21T	27T				
80	-	-	-	22T				
STATIC TORQUE @ 80PSI	60 IN-LB	150 IN-LB	350 IN-LB	850 IN-LB				
	STANDARD BORE SIZES							
ASSEMBLY	-2	-2	-2	0	-1	-2	-3	-4
BORE	.625	.875	1.000	1.125	1.250	1.375	1.500	1.625



TSB AIR APPLIED DYNAMIC STOPPING BRAKE and TSBL TENSION BRAKE

- Split friction lining
- Loco linings for tension applications
- Internal finned rotor for high temperature dissipation

MODEL	STATIC TORQUE @ 80 PSI	MODEL	TORQUE @80 PSI LOCO	BORE
TSB450	450 IN-LB	TSBL450	150 IN-LB	QD BUSHING SIZE "JA" 1 1/4" MAX.
TSB1000	1000 IN-LB	TSBL1000	330 IN-LB	QD BUSHING SIZE "SH" 1 11/16" MAX.
TSB2400	2400 IN-LB	TSBL2400	800 IN-LB	QD BUSHING SIZE "SK" 2 3/8" MAX.

