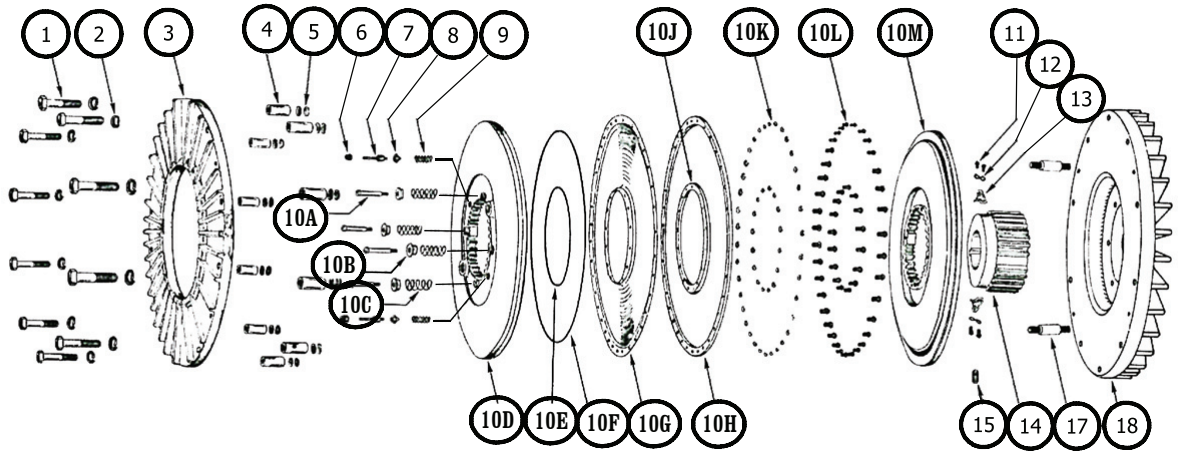


MODEL CR CLUTCH



ITEM	DESCRIPTION	8.5		10		12		14		16		18		20		22		25		28		32		36	
		PART NO.	QTY.	PART NO.	QTY.	PART NO.	QTY.	PART NO.	QTY.	PART NO.	QTY.	PART NO.	QTY.	PART NO.	QTY.	PART NO.	QTY.	PART NO.	QTY.	PART NO.	QTY.	PART NO.	QTY.	PART NO.	QTY.
1.	Cap Screw	1016-11	8	1016-11	10	1017-10	8	1017-10	8	1017-11	10	1017-11	12	1018-12	10	1018-12	12	1018-15	16	1018-16	20	1018-17	24	1018-17	30
2.	Lockwasher	1019-6	8	1019-6	10	1019-8	8	1019-8	8	1019-8	10	1019-8	12	1019-10	10	1019-10	12	1019-10	16	1019-10	20	1019-10	24	1019-10	30
3.	Pressure Plate	3012-01	1	3012-02	1	3012-03	1	3012-04	1	3012-05	1	3012-06	1	3012-07	1	3012-08	1	3012-09	1	3012-10	1	3012-11	1	3012-12	1
4.	Spacer	1001-10	8	1001-10	10	1001-30	8	1001-30	8	1001-30	10	1001-30	12	1001-40	10	1001-40	12	1001-50	16	1001-50	20	1001-60	24	1001-60	30
5.	Adjustment Spacer	1691-1	16	1691-1	20	1691-2	16	1691-2	16	1691-2	30	1691-2	36	1691-3	30	1691-3	36	1691-3	64	1691-3	80	1691-3	96	1691-3	120
6.	Centering Mechanism Locknut	1189-6	2	1189-6	2	1189-6	2	1189-6	2	1189-7	2	1189-7	2	1189-7	3	1189-7	3	1189-9	3	1189-9	3	1189-9	3	1189-9	3
7.	Centering Mechanism Stud	1027	2	1027	2	1027	2	1027	2	1006	2	1006	2	1226	3	1226	3	1285	3	1285	3	1196	3	1196	3
8.	Stud Lock Clip	1042	2	1042	2	1042	2	1042	2	1014	2	1014	2	1014	3	1014	3	1197	3	1197	3	1197	3	1197	3
9.	Centering Mechanism Spring	1040	2	1040	2	1040	2	1040	2	1007	2	1007	2	1007	3	1007	3	1286	3	1286	3	1198	3	1198	3
10.	Inner-Outer Torque Plate Assy.	1148-1	1	1148-2	1	1148-3	1	1148-4	1	1148-5	1	1148-6	1	1148-7	1	1148-8	1	1148-9	1	1148-10	1	1148-11	1	1148-12	1
10A.	Spring Shoulder Bolt	1043	4	1043	4	1043	4	1043	4	1002	4	1002	4	1149	6	1149	6	1224	6	1224	6	1052	6	1052	6
10B.	Spring Retaining Washer	1028	4	1028	4	1028	4	1028	4	1004	4	1004	4	1150	6	1150	6	1024	6	1024	6	1053	6	1053	6
10C.	Release Spring	1038-1	4	1038-1	4	1038	4	1038	4	1003	4	1003	4	1151	6	1151	6	1152	6	1152	6	1054	6	1054	6
10D.	Outer Torque Plate Assy.	1102	1	1104	1	1093	1	1096	1	1098	1	1106	1	1202	1	1204	1	1206	1	1208	1	1210	1	1055	1
	Friction Lining	2031-5	1	2031-6	1	2031-7	1	2031-8	1	2031-1	1	2031-2	1	2031-3	1	2031-4	1	2031-9	1	2031-10	1	2031-11	1	12031-12	1
10E.	Inner Seal	1240-1	1	1240-1	1	1240-4	1	1240-4	1	1240-7	1	1240-7	1	1240-10	1	1240-10	1	1240-5	1	1240-5	1	1240-16	1	1240-16	1
10F.	Outer Seal	1240-2	1	1240-3	1	1240-5	1	1240-6	1	1240-8	1	1240-9	1	1240-11	1	1240-12	1	1240-13	1	1240-14	1	1240-1	5	11240-18	1
10G.	Diaphragm	3039	1	3016	1	3040	1	3041	1	3001	1	3008	1	3085	1	3048	1	3065-2	1	3050-2	1	3051-2	1	3042-2	1
10H.	Outer Clamp Ring	3003-1	1	3003-2	1	3003-3	1	3003-4	1	3003-5	1	3003-6	1	3003-7	1	3003-8	1	3066-12	1	3066-22	1	302-8-32	1	3028-42	1
10J.	Inner Clamp Ring	2003-1	1	2003-1	1	2003-2	1	2003-2	1	2003-3	1	2003-3	1	2003-4	1	2003-4	1	2020-12	1	2020-12	1	2020-22	1	2020-22	1
10K.	Lockwasher	1019-2	40	1019-2	44	1019-2	46	1019-2	50	1019-3	52	1019-3	56	1019-3	72	1019-3	78	1019-4ST	78	1019-4ST	84	1019-4ST	102	1019-4ST	108
10L.	Socket Head Screw	1020	40	1020	44	1020	46	1020	50	1021	52	1021	56	1021	72	1021	78	1008	78	1008	84	1008	102	1008	108
10M.	Inner Torque Plate Assy.	1103	1	1105	1	1094	1	1097	1	1099	1	1107	1	1203	1	1205	1	1207	1	1209	1	1211	1	1056	1
	Friction Lining	2031-5	1	2031-6	1	2031-7	1	2031-8	1	2031-1	1	2031-2	1	2031-3	1	2031-4	1	2031-9	1	2031-10	1	2031-11	1	2031-12	1
11.	Bracket Screw	1015	4	1015	4	1015	4	1015	4	1015	4	1015	4	1015	6	1015	6	1666-4	6	1666-4	6	1666-4	6	1666-4	6
12.	Lockwasher	1019-3	4	1019-3	4	1019-3	4	1019-3	4	1019-3	4	1019-3	4	1019-3	6	1019-3	6	1019-4	6	1019-4	6	1019-4	6	1019-4	6
13.	Centering Mechanism Bracket	1030-1	2	1030-1	2	1095	2	1095	2	1005	2	1005	2	1225	3	1225	3	1287	3	1287	3	1112	3	1112	3
14.	Standard Hub (CW, CR, CK)	2071-*	1	2071-*	1	2018-*	1	2018-*	1	2002-*	1	2002-*	1	3009-*	1	3009-*	1	3031-*	1	3031-*	1	3046-*	1	3046-*	1
15.	Set Screw																								

*Bore and Keyway sizes must be specified when ordering this part.

**Each Keyed Backplate Assembly also includes one Item 18 Registered Backplate.

THE CARLSON COMPANY, INC.

6045 NORTH BROADWAY

WICHITA, KANSAS 67219 USA

PHONE: (316) 744-0481

FAX: (316) 744-2144

E-MAIL: sales@carlsoncompany.com

WEB: www.carlsoncompany.com