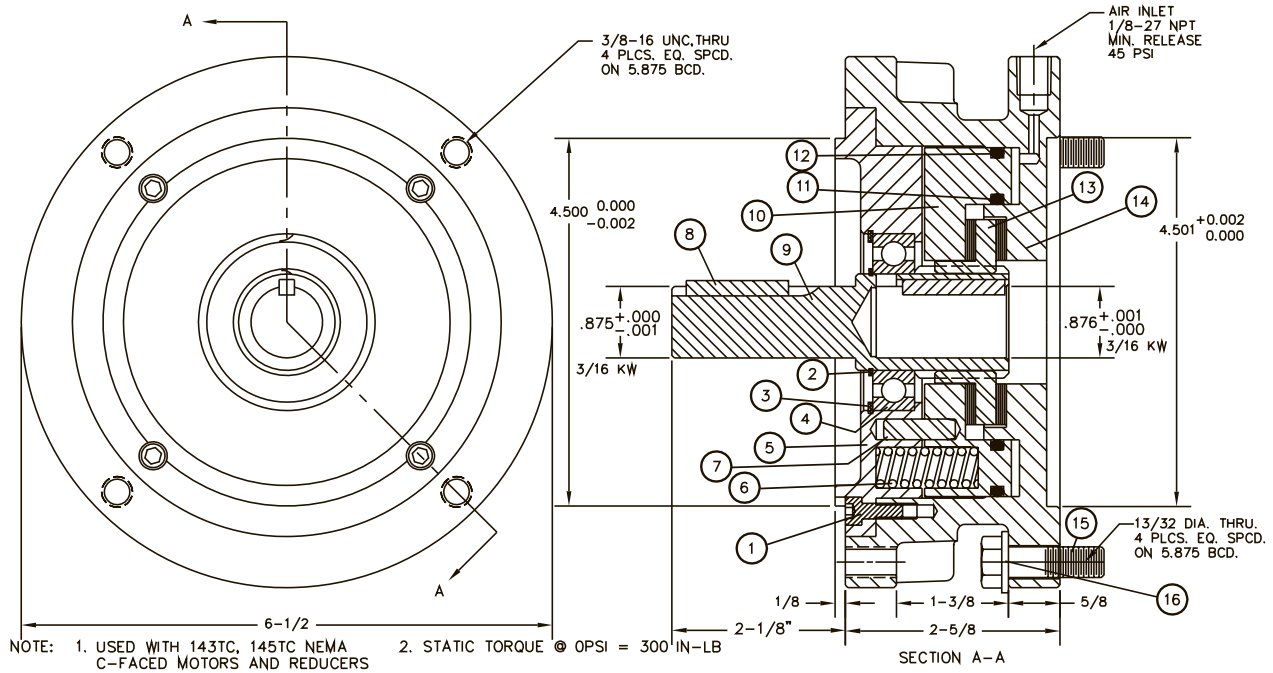


MODEL 875 SBCC



GENERAL DESCRIPTION

The model 875SB-CC is a totally enclosed spring applied-air released brake. When 45-80psi air pressure is applied to the release port the brake is disengaged. When this pressure is exhausted the springs engage the brake. This model is made with a female c-face on the input side and a male c-face on the output side. The unit is assembled and ready for use as shipped

INSTALLATION

Before installing the unit in the female c-face mounting, be sure the hollow shaft is clean and free of burrs. Install the 3/16x1-1/4Lg key in the unit's output shaft. Dress the key or shaft until an easy sliding fit is obtained. Coat the unit's output shaft with anti-seize to prevent corrosion. Slide the unit into the mounting and bolt 4 places with the appropriate length capscrews. Final tighten these bolts. Install the other 3/16x1-1/4Lg key provided in the motor shaft. Apply anti-seize to the motor shaft to prevent corrosion. Install the motor into the unit's input bore and slide it in until the flanges meet. Install and tighten the 4 capscrews and lockwashers. Final tighten these bolts. Install the air line to the 1/8"NPT port. Use a dryer and a lubricator in the air line to prevent internal rust and promote long life. Check the unit several times after put into use to be sure it is not running hot. The maximum case temperature should be 180F°.

MAINTENANCE

This model brake has no items requiring maintenance or adjustment. Items which have limited life and may eventually need replacing include: rotor, orings, and bearings. These items are available in a repair kit as shown on the parts list.

REMOVAL

Remove the (4) capscrews fastening the motor to the input flange and slide the motor out. Remove the air lines. Remove the (4) capscrews fastening the brake to the driven c-face. Slide the brake out of the c-face.

ITEM	DESCRIPTION	PART NO.	Qty.
1.	Capscrew	1656-2	4
2.	Retaining Ring *	2748	1
3.	Retaining Ring *	2749	1
4.	Bearing *	2747	1
5.	Face Plate	2812	1
6.	Spring *	2752	18
7.	Dowel Pin	2753	3
8.	Key *	2621-1	2
9.	Shaft	2741	1
10.	Piston	2742	1
11.	O Ring *	2750	1
12.	O Ring *	2751	1
13.	Torgue Plate Assy. *	2746	1
14.	Brake Housing	2813	1
15.	Capscrew	1357-4	4
16.	Lockwasher	1019-6	4
	Repair Kit (Includes * Items)	2841K	